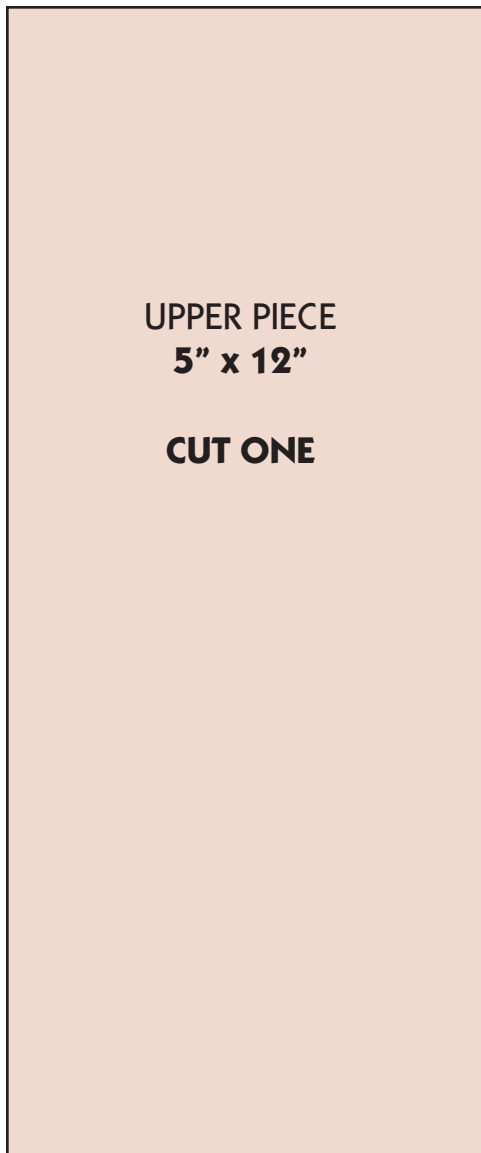


Pattern for Sami-style leather bag

NOTE! These drawings are **NOT** the size needed for your bag!
Enlarge them by photocopying this page or redraw them on paper.

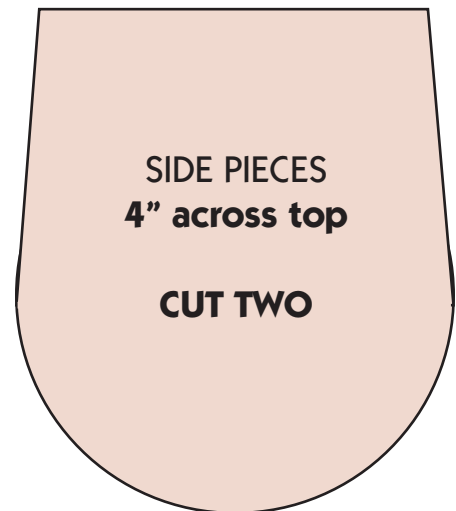
Cut these pieces out of a thin, soft leather such as goat, pig, lamb or reindeer in a weight used for garment/upholstery.

You will also need several 1/4" strips of bright red felt for a seam welt.
The welt is added to the seams so that each seam will have a ridge of felt to protect the seams from wear and add a beautifully decorative touch!



Other materials you'll need are:

- A sharp needle
- Heavy waxed thread (or thin artificial sinew)
- Good scissors
- Red felt (see above)
- A sharp awl to pre-punch sewing holes if needed.
- An X-acto® knife with a #11 blade



LEATHER FOR
DRAWSTRING

1/8" x 20"

CUT FOUR

